

EBB & FLOW

THE NEWSLETTER OF THE HUMBER MANAGEMENT SCHEME

No 8 Spring 2008

Humber Signage Project is Crowned

The Humber Management Schemes' Estuary Signage Project has recently seen its first phase reach completion. Following extensive consultation with all 34 relevant authority members and The Humber Advisory Group, the final design for the Humber Estuary European Marine Site sign was approved for production.

The first 6 signs have recently been installed on sites at Hessle Foreshore, Brough Haven car park and Paull car park on the north bank as well as Alkborough Flats, Barton (waters' Edge) and Cleethorpes (by the discovery centre) on the south bank. In addition to those, a further 2 signs have been put at Donna Nook by relevant authority partner, the MOD.

The signs display information about the Humber Estuary European Marine Site, the Interest features relating to its designation and the partnership of organisations and stakeholders that work together to manage it in a sustainable way. They also provide information on the damage that certain unregulated activities can cause to sensitive areas.

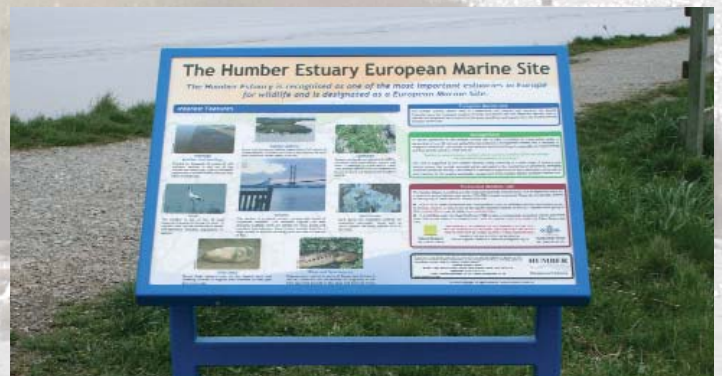
Project Officer Kat Sanders has coordinated this first part of the project, she says 'I am delighted with the way the signage project has received such support from everyone involved. It has been a team effort! This is a testament to the partnership working at the heart of the Humber Management Scheme and a milestone in its ongoing implementation. I hope the signs will be a valuable resource for both local people and visitors to the estuary and help raise awareness of the Humber's importance for wildlife.'

The project is now already making progress on its second phase after recently receiving the backing of The Crown Estate's Marine Communities Fund. They have granted £1500 funding towards the installation of signs at a further six priority sites including Spurn, Blacktoft, Hull and Saltfleet.

Established in 1999, The Crown Estate's Marine Communities Fund has already distributed nearly £2 million to a wide range of practical projects around the coast. The fund was established to provide support to initiatives and programmes which contribute to the development of best practice, and make a significant contribution to the good management and stewardship of the marine estate.



Any feedback or comments on the first phase of new signs would be gratefully received, please use the contact details on the back page to let us know what you think!



One of the new Humber European Marine Site signs. Waters' Edge, Barton upon Humber.

HUMBER

Management Scheme

In This Issue

- **Humber Signage Project is Crowned**
- **On the Beat for the Birds - Policing the Humber Estuary**
- **Humber Flood Risk Management Strategy Launched**
- **Tidal Energy Generator for the Humber**
- **Shoreline Management Plan Review**
- **Marine Bill due for publication**

On the Beat for the Birds – Policing the Humber Estuary

One of the key roles of the Humber Advisory stakeholder Group (HAG) is to assist in the monitoring of those activities which the relevant authorities do not have direct control over. These recreational activities are also the ones which are covered within the Estuary *Codes of Conduct* leaflet produced by HAG to promote best practice amongst estuary users.

For some time now, HAG have been trying to engage with Humberside police to put in place a more strategic system of reporting wildlife crime on the estuary. The advisory group have recently started to conduct monitoring via questionnaires and incident reporting forms to provide information on which activities cause the most damage.

Police Wildlife Crime Officer, Nigel Lound is active within Lincolnshire Police and is on the case of offenders in his area who cause damage to the Humber Estuary SSSI.

Since the implementation of the Countryside and Rights of Way Act 2000 (CROW) persons responsible for damaging a Site of Special Scientific Interest (SSSI) can now be liable to a fine up to £20,000. Lincolnshire Police have had a partnership with Natural England in order to combat such occurrences for a number of years now.

Natural England staff can now supply details of offending vehicles to Lincolnshire Police who can then supply details of registered keepers of offending vehicles in accordance with Data Protection. Registered keepers are then sent a warning letter from Natural England (the statutory enforcement body in this instance) warning that if they are seen on the SSSI again they may well be prosecuted under the Countryside and Rights of Way Act (CROW). This system has proved to be a deterrent thus far.

Persons witnessing vehicles on any SSSI should report the matter, in the first instance to the relevant Police force, which, in the case of the majority of the Humber European Marine Site area is Humberside Police. They can be contacted on 0845 6060222. Don't forget to ask for the incident number when reporting. This will ensure the report is logged on the police force computer and will allow the caller to ring back and ask what happened as a result of the report.

Unfortunately Humberside Police do not have a full time Wildlife Crime Officer at the moment, unlike Lincolnshire Police. It is imperative that **ALL** incidents of Wildlife crime are reported if there is to be any change in this situation.

If you require any further advice on SSSI damage or wildlife crime in general please contact:

Nigel Lound, Wildlife Crime Officer, Lincolnshire Police.

Tel: 01522 558684.

Email: nigel.lound@lincs.pnn.police.uk

Humber Flood Risk Management Strategy Launched

After extensive consultation and planning, the Humber Strategy, the Environment Agency's long term plan for managing flood risk from the Humber Estuary was launched on 7 March 2008. The strategy comprises a suite of documents:

- **Main strategy document** – available upon request
- **Summary document** – mailed directly to those most affected around the Humber Estuary
- **Individual flood area sheets** – available to download or request

It was launched by the Rt Hon Elliot Morley MP to invited guests in Hull on Friday 7 March 2008. This was followed by a series of drop in sessions in Grimsby, Swinefleet, North Somercotes, Gilberdyke, Welwick, Hull and Barton on Humber. These sessions gave members of the public the opportunity to meet with Environment Agency representatives and ask any questions they may have had.

Philip Winn, Humber Strategies Manager said, *"I am delighted that the Rt Hon Elliot Morley MP joined us to launch this vital piece of work for the people living around the Humber Estuary. This has been an extensive and well thought through piece of work which launches a major programme for improving the defences around the estuary. In the strategy we make recommendations aimed at ensuring that flood risk is managed in a sustainable way around the Humber Estuary. It will look at different ways of managing flood risk; raising defences where appropriate, but also introducing sites for managed realignment and flood storage which will help maintain valuable habitats."*

"It aims to ensure a good standard of protection from tidal flooding for the next 25 years and beyond for 99 per cent of residents round the estuary and the important industrial areas. However, there are difficult decisions to make as our funds are limited and so we will not be able to improve all the estuary's defences. The documents identify those areas that could be affected and answers some of the questions that may be asked."

If you would like more information please visit www.environment-agency.gov.uk. Alternatively, you can email us at: humber.strategy@environment-agency.gov.uk or write to us at:

**Philip Winn, Humber Strategies Manager,
Environment Agency, 1 Viking Close,
Great Gutter Lane East, Willerby, Hull HU10 6DZ.
Tel: 01709 312962**

Tidal Energy Generator for the Humber



The Pulse Stream 100 prototype at high water (protruding 5 metres)

Yorkshire based company Pulse Generation (Tidal) Ltd (PGT) has developed a tidal stream generation technology and has chosen the Humber estuary to pilot the device later this year.

The system uses high-performance hydrofoils similar to aeroplane wings that move up and down like whale tails within the water, taking energy from tidal stream currents. Following successful trials of the device by the University of Hull, a scaled down prototype device is now ready, subject to consents, to be deployed in the estuary in order to demonstrate the technology in a real environment.

The Pulse device has been designed for both deep and shallow water environments, improving its scope for placement near the shore and in busy estuaries where power demand is often high. The tidal stream generator will extract energy from underwater currents in a manner similar to wind generators taking energy from the wind, but with the tidal energy resource being more reliable and the device able to extract more energy, for its size, than a wind turbine. At full capacity this prototype will generate enough electricity for about 70 homes, and will be one of the first tidal power machines to supply the national grid.

When finding a location suitable for the deployment, there were three main criteria which needed to be met: sufficient tidal flow, a water depth of about 5m at Chart Datum and the device needed to be situated outside the main shipping channels. An examination of the estuary for suitable sites

was carried out in conjunction with ABP who suggested Upper Burcom, 1km offshore from the south bank of the Humber estuary, and approximately 1km downstream of Immingham Oil Terminal. The proposed deployment site is therefore within the main body of the estuary and fulfils the requirements of the device, but is also outside the designated shipping lanes.

An alternative site at North Killingholme was also considered, however, the site at Upper Burcom was the preferred choice based on its overall suitability and on the grounds that environmental impacts were expected to be lower compared to the alternative site. In particular, by deploying the device at the Upper Burcom site, impacts to the intertidal habitat were to be minimised as the onshore cable could be run from the subtidal zone straight to land via the Millennium Inorganic Chemicals (MIC) jetty. In addition, this route is already dedicated to industrial use with a viable grid connection already in place.

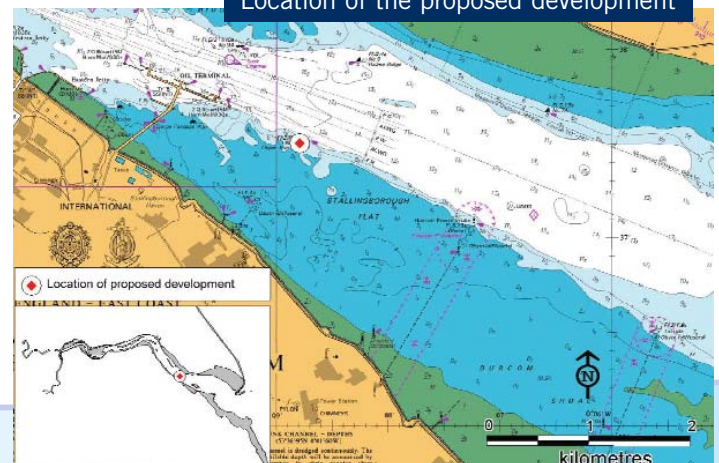
The Institute of Estuarine and Coastal Studies were commissioned by Pulse to undertake a full Environmental Impact Assessment of the proposed deployment, thoroughly examining all impacts to the human, physical and biological environments. Predicted impacts included those caused by noise during construction and by disturbance to the seabed during both construction and operation. However, by adopting mitigation measures agreed with Natural England, impacts are generally expected to be minor and localised and the site is expected to return to its original state following the removal of the device at the end of the trial.

The project is now in its final stages of gaining the statutory consents and the device is due to be deployed in March.

**Shona Thomson, Coastal Geographer,
Institute of Estuarine and Coastal Studies,
University of Hull.**

Find out more: www.pulsegeneration.co.uk

Location of the proposed development



Shoreline Management Plan Review

Management Plans covering the shorelines of Lincolnshire and the East Riding of Yorkshire are currently undergoing a thorough review.

The project to review the existing Shoreline Management Plans (SMP2) is being delivered by the Humber Estuary Coastal Authorities Group (HECAG). It is supported by project consultants Scott Wilson Ltd and East Riding of Yorkshire Council in their role as the lead authority.

The two year project will cover the coastal zone between Flamborough Head in the East Riding of Yorkshire and Gibraltar Point in Lincolnshire. Due to the national significance of the project area, the Department for Environment, Food and Rural Affairs (Defra) has allocated 100% grant funding of £200,000. The Environment Agency is supporting the project with additional funding of £70,000.

SMP2's provide a large-scale assessment of the risks associated with coastal processes. The assessment is used to develop policies to manage coastal defences in the most sustainable way. This involves assigning one of four policies defined by Defra to each section of the coast within the Plans area.

The four policies are:

- To hold the existing defence line.
- To advance the existing defence line.

- Identify a new line of defence through managed realignment
- Take no active intervention - A decision not to invest in providing or maintaining defences.

The SMP will be reviewed in close liaison with the Environment Agency and their Flood Risk Management Strategy. Many of the conclusions adopted within the EA's strategy may also be adopted in the SMP where the study areas overlap (outer estuary). The SMP team will review the decisions made by the Environment Agency for these areas and decide whether they are appropriate in the broader coastal context.

It is essential that the policies developed take into account the needs of coastal communities as well as the historic, natural and human environments. As part of the first phase of stakeholder engagement a questionnaire has been produced, giving people the opportunity to identify key issues and features.

The questionnaire is available from the project website, www.hecag-smp2.co.uk. Alternatively you can obtain a copy of the questionnaire along with additional information on SMP2 by contacting Jeremy Pickles, Senior Coast Officer on 01482 391727.

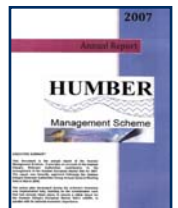


HMS Third Annual Report

The third Humber Management Scheme annual report (2007) has recently been published. The report includes a review of the action plan for each of the sections included within the scheme and provides a summary and update on

the work that has been undertaken throughout the year towards the scheme's ongoing implementation.

The report can be downloaded from www.humberems.co.uk. Hard copies are available on request: 01652 631520.



Marine Bill due for publication

Following a long period of preparation and formal consultation in 2007, a Marine Bill will be published in March 2008.

The Defra web page states: *"The Government's vision for the marine environment is for clean healthy, safe, productive and biologically diverse oceans and seas. To help deliver this vision Defra are preparing a Marine Bill.*

"It will put in place a better system for delivering sustainable development of the marine and coastal environment. This will address both the use and protection of our marine resources."

There are five broad sections, which are:

1. A proposal to set up a new Marine Management Organisation (MMO).

2. Marine planning.
3. Licensing marine activities.
4. Marine nature conservation.
5. Management of marine fisheries.

The legislation will have a profound effect on the management of the marine environment for the next generation, and it comes at a time when action to manage the seas sustainably has never been more urgent.

For further information please see: <http://www.defra.gov.uk/ENVIRONMENT/water/marine/uk/policy/marine-bill/index.htm>

A more detailed version of this article by Humber Advisory Group member Bill Rigby can be found on www.humberems.co.uk – under 'news'.

The next issue of Ebb & Flow will be published in Autumn 2008. If you would like further information about the Humber Management Scheme, please contact; Humber Project Officer, Humber Management Scheme, Waters' Edge Visitors Centre, Maltkiln Road, Barton upon Humber, North Lincolnshire, DN18 5JR

Tel: 01652 631520 E-mail: info@humberems.co.uk Website: www.humberems.co.uk

Ebb & Flow is produced by the Humber Management Scheme. Help with its distribution is provided by the Environment Agency and Natural England. We apologise if you receive duplicate copies; please pass them on to interested colleagues, thank you.

This publication is printed on recycled paper.